

## Digital Depth Gage MarCal 30 EWri-D

### Features

#### Functions:

- ON/OFF
- AUTO-ON / OFF
- mm/inch
- LOCK function (key lock)
- RESET (set display to zero)
- PRESET (for entering a numerical value)
- DATA (Data transmission)
- HOLD (storage of measured values)
- High contrast analog display
- Locking screw above
- Lapped guide way
- Measuring surfaces made of steel
- Slide and beam made of hardened stainless steel
- Immediate measurements due to the Reference system
- Raised guide ways for the protection of the scale
- Excellent resistance against dust, coolants and lubricants
- Dirt wipers are integrated in the slide
- **Height of digits:** 11mm
- **Data interface:** USB, Opto RS232C, Digimatic, Integrated wireless
- **Energy supply:** Battery, life span ca. 3 years
- **IP protection category:** IP 67
- **Scope of delivery:** Battery, Instruction manual, Case

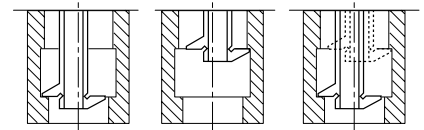


REFERENCE



### Application:

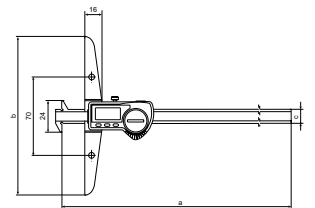
Measuring groove widths and distances between grooves



### Technical Data

Order no.	Product type	Measuring range	Resolution	Error limit	Standard
		mm	mm/inch	mm	
4126533	30 EWri-D	0 – 200	0,01 / .0005"	0,03	Factory standard
4126534	30 EWri-D	0 – 300	0,01 / .0005"	0,04	Factory standard

Order no.	a	b	c
	mm	mm	mm
4126533	281	100	12
4126534	381	150	12

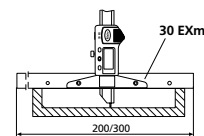


### Accessories

Order no.	Product description	Product type
4102220	Receiver incl. Software MarCom Std.	i-Stick
4102520	Battery 3 V, CR 2032	
4126510	Cross Beam Extension (300 mm)	30 EXm
4126511	Cross Beam Extension (200 mm)	30 EXm



i-Stick



30 EXm

## Digital Depth Gage MarCal 30 EWR-D

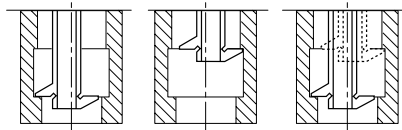


REFERENCE



### Application:

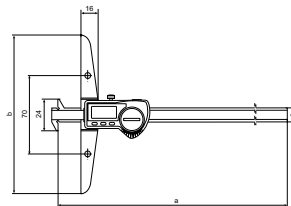
Measuring groove widths and distances between grooves



### Technical Data

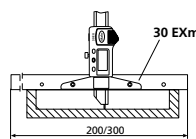
Order no.	Product type	Measuring range	Resolution	Error limit	Standard
		mm	mm/inch	mm	
4126523	30 EWR-D	0 – 200	0,01 / .0005"	0,03	Factory standard
4126524	30 EWR-D	0 – 300	0,01 / .0005"	0,04	Factory standard

Order no.	a	b	c
	mm	mm	mm
4126523	281	100	12
4126524	381	150	12



### Accessories

Order no.	Product description	Product type
4102357	Data Connection Cable USB (2 m) incl. Software MarCom Std.	16 EXu
4102410	Data Connection Cable RS232C (2 m)	16 EXr
4102520	Battery 3 V, CR 2032	
4102915	Digimatic data cable (2 m)	16 EWd
4126510	Cross Beam Extension (300 mm)	30 EXm
4126511	Cross Beam Extension (200 mm)	30 EXm



30 EXm

### Features

#### Functions:

- ON/OFF
- AUTO-ON / OFF
- mm/inch
- LOCK function (key lock)
- RESET (set display to zero)
- PRESET (for entering a numerical value)
- DATA (Data transmission via connection cable)

- High contrast analog display
- Locking screw above
- Lapped guide way
- Measuring surfaces made of steel
- Slide and beam made of hardened stainless steel
- Immediate measurements due to the Reference system
- Raised guide ways for the protection of the scale
- Excellent resistance against dust, coolants and lubricants
- Dirt wipers are integrated in the slide
- **Height of digits:** 8,5mm
- **Data interface:** USB, Opto RS232C, Digimatic, Integrated wireless
- **Energy supply:** Battery, life span ca. 3 years
- **IP protection category:** IP 67
- **Scope of delivery:** Battery, Instruction manual, Case

## Digital Depth Gage MarCal 30 EWri-N / 30 EWR-N

### Features

#### Functions 30 EWri-N:

- ON/OFF
- AUTO-ON / OFF
- mm/inch
- LOCK function (key lock)
- RESET (set display to zero)
- PRESET (for entering a numerical value)
- DATA (Data transmission)
- HOLD (storage of measured values)

#### Functions 30 EWR-N:

- ON/OFF
- AUTO-ON / OFF
- mm/inch
- LOCK function (key lock)
- RESET (set display to zero)
- PRESET (for entering a numerical value)
- DATA (Data transmission via connection cable)

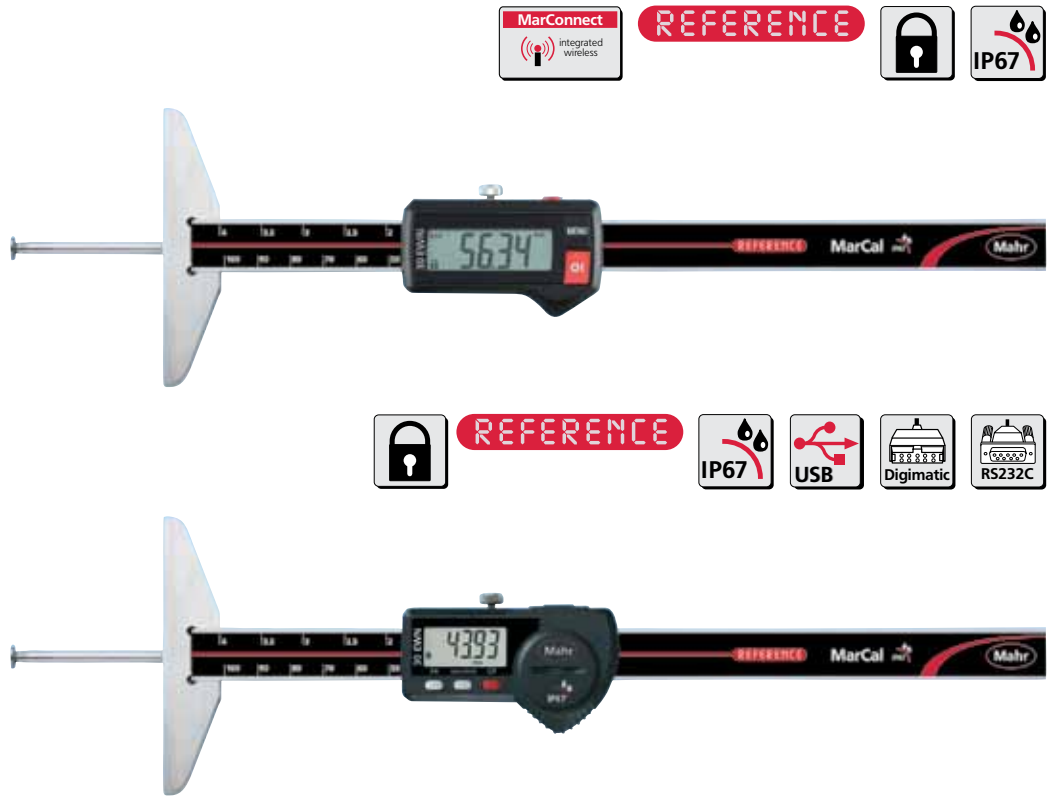
- High contrast analog display
- Locking screw above
- Lapped guide way
- Measuring surfaces made of steel
- Slide and beam made of hardened stainless steel
- Immediate measurements due to the Reference system
- Raised guide ways for the protection of the scale
- Excellent resistance against dust, coolants and lubricants
- Dirt wipers are integrated in the slide

#### Features 30 EWri-N:

- **Height of digits:** 11mm
- **Data interface:** Integrated wireless
- **Energy supply:** Battery, life span ca. 3 years
- **IP protection category:** IP 67
- **Scope of delivery:** Battery, Instruction manual, Anvils 30 Ent (1mm), 902 (4mm) and 903 (4mm), Case

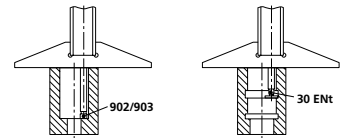
#### Features 30 EWR-N:

- **Height of digits:** 8,5mm
- **Data interface:** Integrated wireless
- **Energy supply:** Battery, life span ca. 3 years
- **IP protection category:** IP 67
- **Scope of delivery:** Battery, Instruction manual, Anvils 30 Ent (1mm), 902 (4mm) and 903 (4mm), Case



### Application:

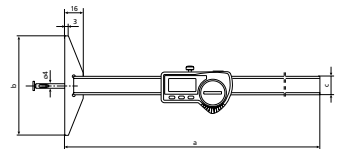
Measuring groove widths and distances between grooves



### Technical Data

Order no.	Product type	Measuring range	Resolution		Error limit	Standard
			mm	mm/inch		
4126532	30 EWri-N	0 – 100	0,01	/.0005"	0,03	Factory standard
4126513	30 EWR-N	0 – 100	0,01	/.0005"	0,03	Factory standard

Order no.	a	b	c
	mm	mm	mm
4126532	268	85	16
4126513	268	85	16

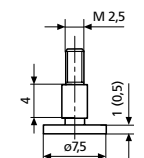


### Accessories

Order no.	For measuring instrument	Product description	Product type
4102220	30 EWri-N	Receiver incl. Software MarCom Std.	i-Stick
4102357	30 EWR-N	Data Connection Cable USB (2 m) incl. Software MarCom Std.	16 EXu
4102410	30 EWR-N	Data Connection Cable RS232C (2 m)	16 EXr
4102520	30 EWri-N, 30 EWR-N	Battery 3 V, CR 2032	
4102915	30 EWR-N	Digimatic data cable (2 m)	16 EWd
4126310	30 EWri-N	Disc Type Anvil (7,5 x 0,5 mm)	30 Ent
4882022	30 EWri-N	Disc Type Anvil (7,5 x 1 mm)	30 Ent



i-Stick



30 Ent